

U.S. National Ice Center

PRESS RELEASE

FOR IMMEDIATE RELEASE

Contact: LTJG Jared Doris, USN

NIC.PAO@noaa.gov

301-943-6977



Icebergs A-23D and A-23E Have Calved from Iceberg A-23A

15JUL2025, SUITLAND, MD — The U.S. National Ice Center (USNIC) has confirmed that icebergs A-23D and A-23E calved from A-23A in the northern Weddell Sea. As of July 15, A-23A was centered at 56° 26' South and 33° 59' West and measured 40 nautical miles on its longest axis and 28 nautical miles on its widest axis. A-23D was centered at 56° 26' South and 33° 25' West and measured 13 nautical miles on its longest axis and 6 nautical miles on its widest axis. A-23E was centered at 56° 31' South and 33° 16' West and measured 9 nautical miles on its longest axis and 4 nautical miles on its widest axis. A-23A first calved from the Ronne Ice Shelf in 1986.

The new icebergs were first spotted and confirmed by USNIC Analyst Britney Fajardo using the Sentinel-1 image below.

Iceberg names are derived from the Antarctic quadrant in which they were originally calved. The quadrants are divided counter-clockwise in the following manner:

A = 0-90W (Bellingshausen/Weddell Sea)
B = 90W-180 (Amundsen/Eastern Ross Sea)
C = 180-90E (Western Ross Sea/Wilkesland)
D = 90E-0 (Amery/Eastern Weddell Sea)

When first sighted, an iceberg's point of origin is documented by USNIC. The letter of the quadrant, along with a sequential number, is assigned to the iceberg. For example, C-19 is sequentially the 19th iceberg tracked by USNIC in Antarctica between 180-90E (Quadrant C). Icebergs with letter suffixes have calved from already named icebergs, where the letters are added in sequential order. For example, C-19D is the 4th iceberg to calve off the original C-19 iceberg.

Iceberg positions are analyzed weekly and are available on the USNIC webpage at:
<https://usicecenter.gov/Products/AntarcIcebergs>

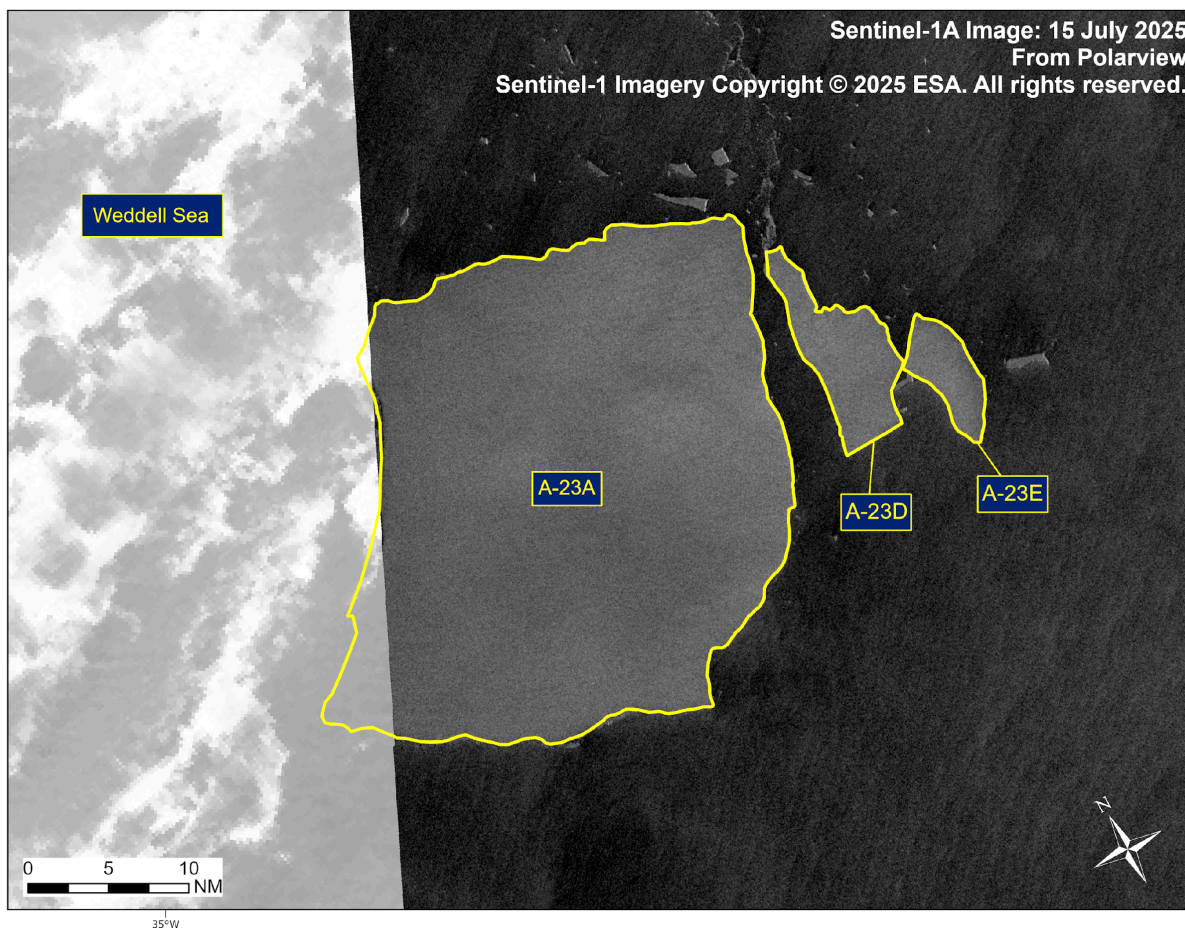


Figure 1: Sentinel-1A image of icebergs A-23A, A-23D, and A-23E from July 15, 2025.

The U.S. National Ice Center (USNIC), in collaboration with its global partners, empowers mariners and Naval forces operating in polar, subpolar, and Great Lakes regions with authoritative and timely snow, sea- and lake-ice products and forecasts. USNIC safeguards life and property at sea, defends access and commerce, and further enhances Naval maneuver and superiority. To access daily products, weekly products, archival data and much more of USNIC data in various formats, visit the USNIC webpage at: <https://usicecenter.gov/Products>.

For more information, please contact:
 U.S. National Ice Center
 Command Duty Officer
 E-mail: nic.cdo@noaa.gov
 Voice: (301) 943-6977
 Visit us on Facebook at: <https://www.facebook.com/usnatice/>

